

# Minor Scales: Exercise 1a

## (The minor scale "families" from 6 notes))

JimO

### 1. D "Natural" minor, "relative minor (to F major), AEOLIAN MODE.

This scale is considered the "parent" scale, or the "parallel" minor of a given key.

1 2 b3 4 5 b6 b7 1/8 b7 b6 5 4 3 2 1

(Raise 6th degree)

The explanatory numbering system is based on the practice of describing each scale relative to the major scale built from each root-tone.

### 5 2. D Harmonic Minor.

1 2 b3 4 5 b6 7 1 Bb A G F B A G F

### 9 3. D Melodic Minor.

(Contemporary form)

(Raise 6 and 7th degree)

1 2 3 4 5 6 7 1 B A G F Bb A G F

### 13 4. D Melodic Minor.

(Classical Form)

(Descends with lowered 6 and 7th degree)

1 2 3 4 5 6 7 1 B A G F Bb A G F

### 17 5. D Dorian Minor. Forms at 2nd degree of Major/Ionian mode.

This is a very popular scale for Jazz/Pop/Blues improvisors.

1 2 3 4 5 b6 7 1 B A G F Bb A G F

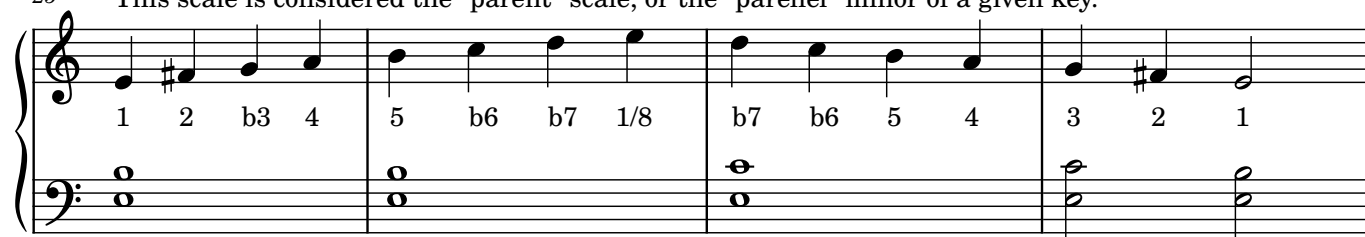
### 21 6. D Phrygian Minor. This mode contains a b2 scale degree. Popular in the music of Spain.

1 b2 3 4 5 b6 7 1 B A G F Bb A G F

2

## 1. E "Natural" minor, "relative minor (to G major), AEOLIAN MODE.

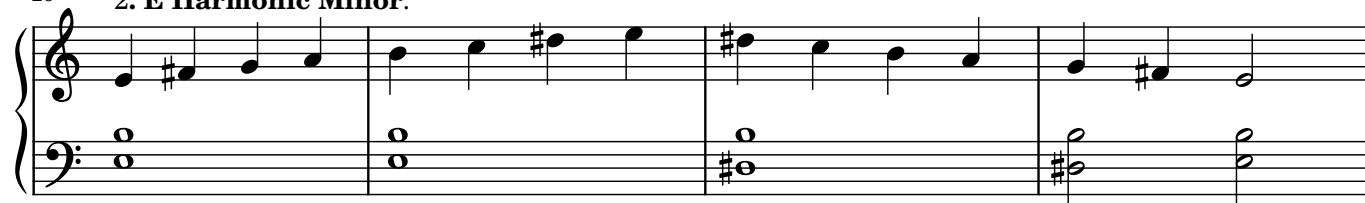
25 This scale is considered the "parent" scale, or the "parallel" minor of a given key.



(Raise 6th degree)

The explanatory numbering system is based on the practice of describing each scale relative to the major scale built from each root-tone.

## 29 2. E Harmonic Minor.



## 33 3. E Melodic Minor.

(Contemporary form)

(Raise 6 and 7th degree)



## 37 4. E Melodic Minor.

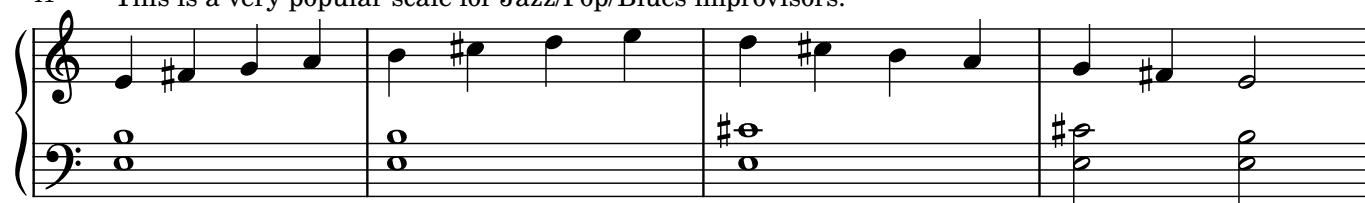
(Classical Form)

(Descends with lowered 6 and 7th degree))



## 41 5. E Dorian Minor. Forms at 2nd degree of Major/Ionian mode.

This is a very popular scale for Jazz/Pop/Blues improvisors.



## 45 6. E Phrygian Minor. This mode contains a b2 scale degree. Popular in the music of Spain.



# 1. G "Natural" minor, "relative minor (to Bb major), AEOLIAN MODE.

49 This scale is considered the "parent" scale, or the "parallel" minor of a given key.

(Raise 6th degree)

The explanatory numbering system is based on the practice of describing each scale relative to the major scale built from each root-tone.

## 53 2. G Harmonic Minor.

## 57 3. G Melodic Minor.

(Contemporary form)

(Raise 6 and 7th degree)

## 61 4. G Melodic Minor.

(Classical Form)

(Descends with lowered 6 and 7th degree))

## 65 5. G Dorian Minor. Forms at 2nd degree of Major/Ionian mode.

This is a very popular scale for Jazz/Pop/Blues improvisors.

## 69 6. G Phrygian Minor. This mode contains a b2 scale degree. Popular in the music of Spain.

4

# 1. B "Natural" minor, "relative minor (to D major), AEOLIAN MODE.

73

This scale is considered the "parent" scale, or the "parallel" minor of a given key.

(Raise 6th degree)

The explanatory numbering system is based on the practice of describing each scale relative to the major scale built from each root-tone.

77

## 2. B Harmonic Minor.

81

## 3. B Melodic Minor.

(Contemporary form)

(Raise 6 and 7th degree)

85

## 4. B Melodic Minor.

(Classical Form)

(Descends with lowered 6 and 7th degree))

89

## 5. B Dorian Minor. Forms at 2nd degree of Major/Ionian mode.

This is a very popular scale for Jazz/Pop/Blues improvisors.

93

## 6. B Phrygian Minor. This mode contains a b2 scale degree. Popular in the music of Spain.

1. C "Natural" minor, "relative minor (to Eb major), AEOLIAN MODE.

97 This scale is considered the "parent" scale, or the "parallel" minor of a given key.

(Raise 6th degree)

The explanatory numbering system is based on the practice of describing each scale relative to the major scale built from each root-tone.

101 2. E Harmonic Minor.

105 3. E Melodic Minor.

(Contemporary form)

(Raise 6 and 7th degree)

109 4. E Melodic Minor.

(Classical Form)

(Descends with lowered 6 and 7th degree)

113 5. E Dorian Minor. Forms at 2nd degree of Major/Ionian mode.

This is a very popular scale for Jazz/Pop/Blues improvisors.

117 6. E Phrygian Minor. This mode contains a b2 scale degree. Popular in the music of Spain.

## 6

## 1. F# "Natural" minor, "relative minor (to A major), AEOLIAN MODE.

This scale is considered the "parent" scale, or the "parallel" minor of a given key.

121

(Raise 6th degree)

The explanatory numbering system is based on the practice of describing each scale relative to the major scale built from each root-tone.

125

2. F# Harmonic Minor.

129

3. F# Melodic Minor. (Contemporary form) (Raise 6 and 7th degree)

133

4. F# Melodic Minor. (Classical Form) (Descends with lowered 6 and 7th degree))

137

5. F# Dorian Minor. Forms at 2nd degree of Major/Ionian mode. This is a very popular scale for Jazz/Pop/Blues improvisors.

141

6. F# Phrygian Minor. This mode contains a b2 scale degree. Popular in the music of Spain.